

# Hidden values on the edge of the Mazowieckie and Świętokrzyskie voivodships.

## 12-13 X 2022

### Day one 12 X 2022

**6.45** Meeting place – School

**7.00** Departure from the parking lot.

**9.00** – Visit. The Museum of Metallurgy and Machine Industry in Chlewiska, which includes historic buildings that are the remains of the former ironworks, we can see rich collections of historic passenger cars such as Syrenka, Warszawa, Polish Fiat 1500, including the last sedan and station wagon model. There are also numerous prototype cars, such as: Wars, Syrena 110, Warszawa 210 or Stratopolonez or Polonaise with a Ferrari engine. There are over 40 cars to see. We will also find there a rich collection of two-wheelers: over 40 motorcycles and mopeds of Polish and foreign production, e.g.: Żak, Komar, Osa WFM, SHL, Junak, NSU, Wespa, DKW. <https://nmt.waw.pl/huta-zelaza-w-chlewiskach/>



**10.00** - Departure from Chlewiska towards Szydłowiec.

**10.30** - We visit the "Museum of Folk Musical Instruments in Szydłowiec"

The Museum of Folk Musical Instruments in Szydłowiec which has in its collection the largest collection of folk musical instruments in Poland, one of the oldest museums of this type in the world, and according to some musicologists the first independent museum of this type in the world, is an institution particularly predestined to undertake active activities related to the subject of music and folk musical instruments. Sightseeing combined with workshops of the second group. <https://muzeuminstrumentow.pl/>





**12.15** Departure from Szydłowiec towards Podzamecze

**13.30** Visiting the Leonardo da Vinci Science Centre, [https://cndavinci.pl/-Muzeum multimedialne](https://cndavinci.pl/-Muzeum-multimedialne).

Multimedia-mechatronic exhibitions.

- "Man – an extraordinary machine", dealing with issues related to the construction and life functions of man.
- "Man – a cog in the machine of nature", concerning ecological and natural issues.
- External exhibition – green areas surrounding the Centre building, in the form of a phenomenal garden, in which we have integrated many scientific exhibits.



**15.45** Departure to the place of accommodation.

**16.45** Arrival at the Holiday Resort "Grynwald" accommodation.



**18.00** Half board

**20.00** A bonfire or the integration of the group on the premises in the form of Disco.



## *Day two 13 X 2022*

**7.30** Breakfast

**8.15** Check-out

**8.40** Departure from an accommodation in the direction of Ujazd.

**9.15** We visit the largest ruins of the castle in Poland "Krzyżtopór"

<https://krzyztopor.org.pl/zamek/index.php/pl/>



Away from the main roads and trails, the ruins of the Krzyżtopór castle hide among the Świętokrzyskie hills and cultivated fields. This place is delightful, and the castle legends and stories about its power stimulate our imagination. Until the construction of Versailles, it was the largest palace in Europe. The building itself was created on the basis of a calendar and had 365 windows and one additionally opened in a leap year. There were 52 chambers, which is as many as weeks a year. 12 large halls referred to the number of months, and 4 towers symbolized the seasons.

**10.15** Departure from the castle. towards the Neolithic Settlement. [http://osada-kopiec.pl/wp-content/uploads/2022/03/oferta\\_Kopiec\\_2022\\_S.pdf](http://osada-kopiec.pl/wp-content/uploads/2022/03/oferta_Kopiec_2022_S.pdf)



**10.20-10.30** Neolithic settlement in Kopiec.

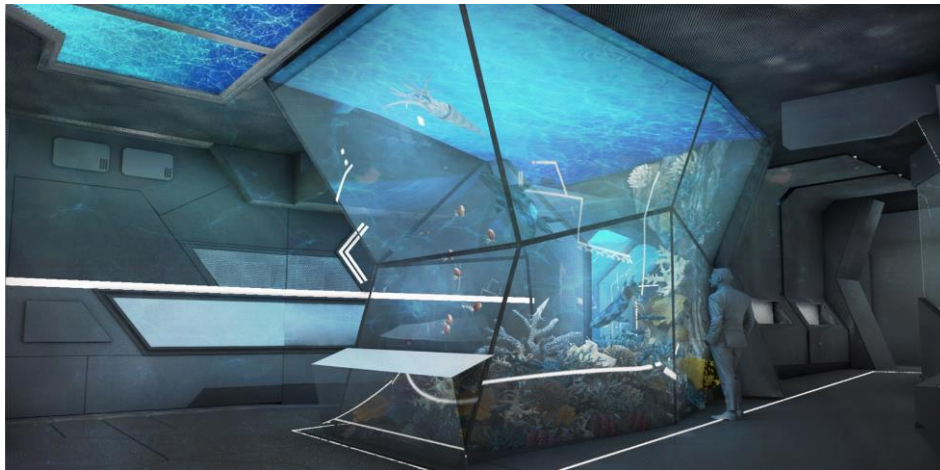
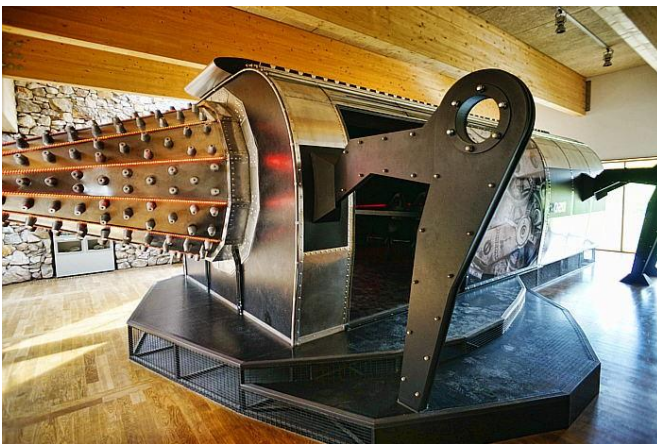
In order to move into the times of the Stone Age, in addition to the reconstruction of the settlement and the possibility of observing the life of that era, the following attractions await you: · A bustling settlement- Archaeological excavation-Neolithic fishing-Making of fishing nets- Archery workshops- Work on a stone mill-Neolithic cuisine Spinning- Neolithic ZOO - Clay making (Pottery) workshops- Prehistoric beliefs-These attractions take place in rotational mode.

**12. 00** Departure from the settlemet for lunch.

**12.15** Cyrkon Restaurant <https://www.cyrkon.org.pl/gallery>

**13.00** Departure in the direction of Geonatura Kielce

**14.00** Geoeducation Centre - Wietrznia Nature Reserve. The leitmotif is a journey back in time to the distant past. UNDERWATER RESEARCH STATION "CHRONOS", TIME CAPSULE – 5D CINEMA, CAVE AND GROTTO



**15.30** Departure from the Geocentre towards Warsaw.

**18.00** Arrival in Warsaw

**The price includes: Accommodation, catering, transport, pilot care, insurance, guide fees, tourist attractions and workshops.**